

GLOMIDCO

GLOMIDCO

Marcel Grauwen

CEO & CTO

Ir. M.A. Grauwen

Mobile: +31 651 827 062

E-mail: marcel.grauwen@glomidco.com

Straight through XBRL processing

Please be interactive

If you've a question, please **ask using a microphone!**

Please note: The speaker has **severe hearing problems!**

Interactivity has our preference !!



<https://nl.linkedin.com/in/marcelgrauwen>



GLOMIDCO & XBRL

GLOMIDCO has taken a completely different approach to tackle the XBRL problem

Simplification and zero coding is what GLOMIDCO has to offer for XBRL usage.

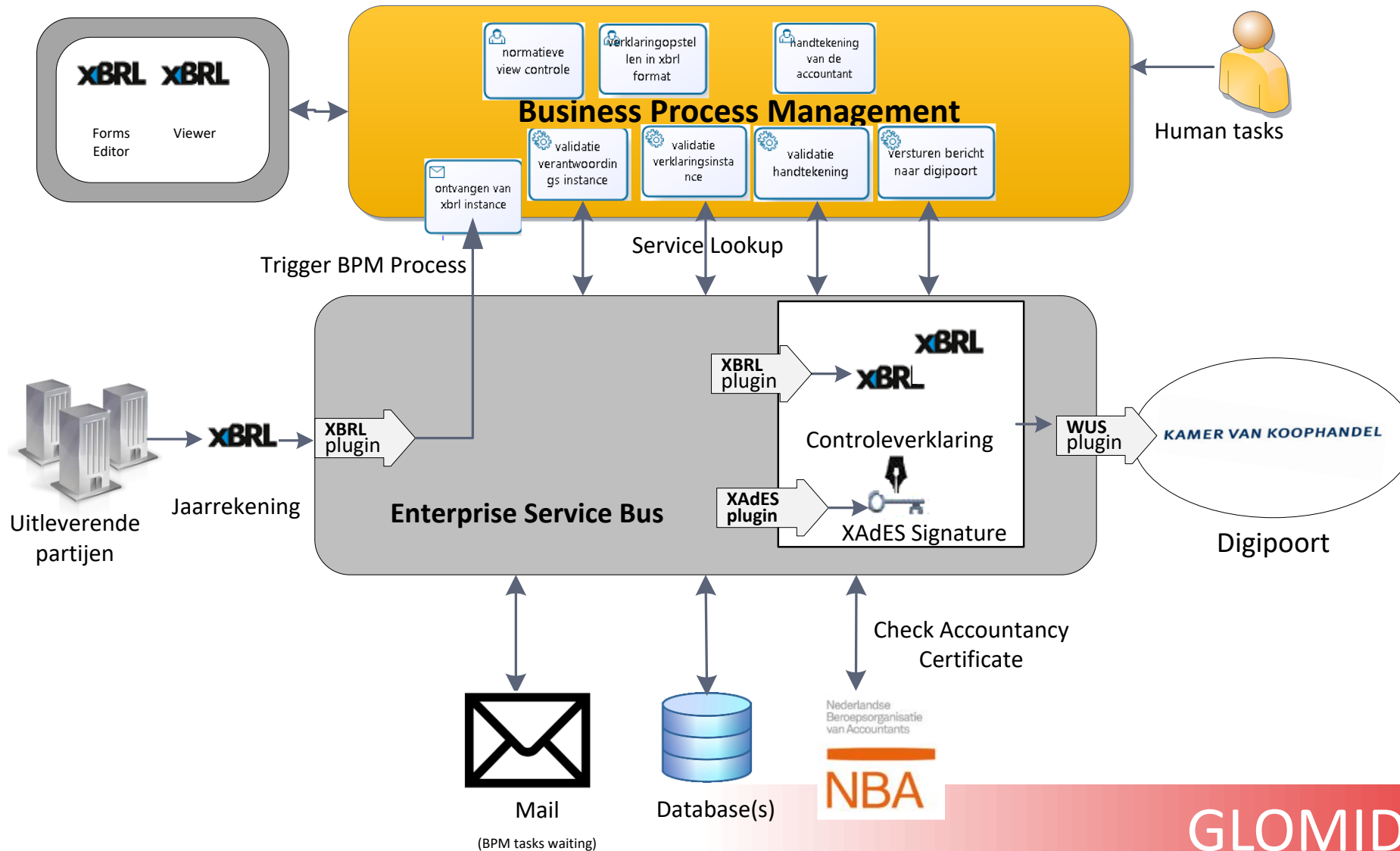
my XBRL journey: 2008-2014

- Build middleware components for handling XBRL as component in a wide range of middleware products (Tibco BW, SF MuleSoft, IBM/SAG Webmethods)
- Full functional and based on a **shared JAVA based XBRL processor**
- Build for fast and reliable Straight Through Processing (**STP**)
- All calculations and hard crunching on XBRL meta data done at **start/init-time**),
Milliseconds for each XBRL transaction **run-time**
- Adhering to the Taxonomy package standard

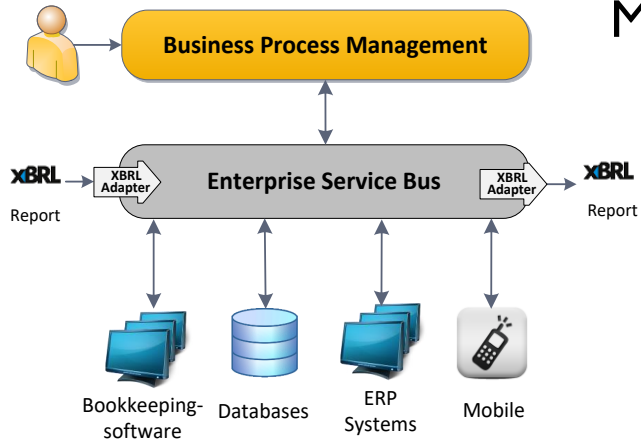
BUT....

- XBRL standard was expanding faster than JAVA resources available
- Unfortunately, the world was not ready for Middleware based XBRL solutions
- Project Halted (suspended and ready for relaunch)

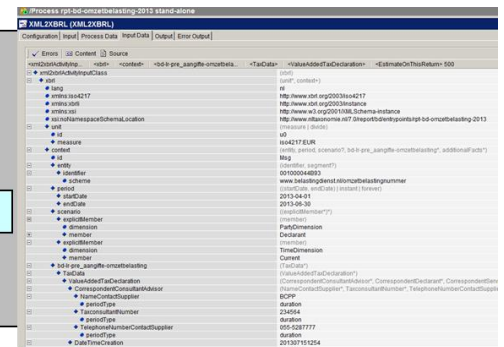
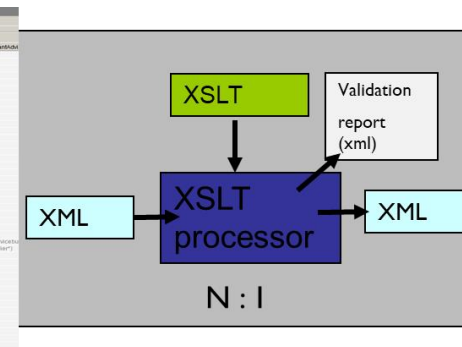
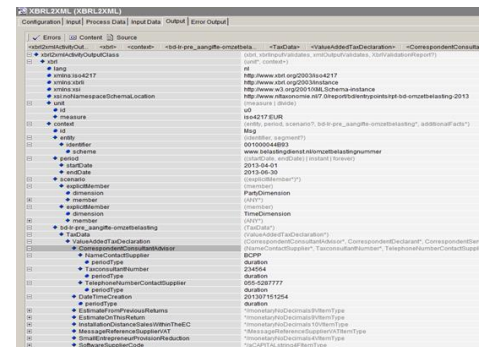
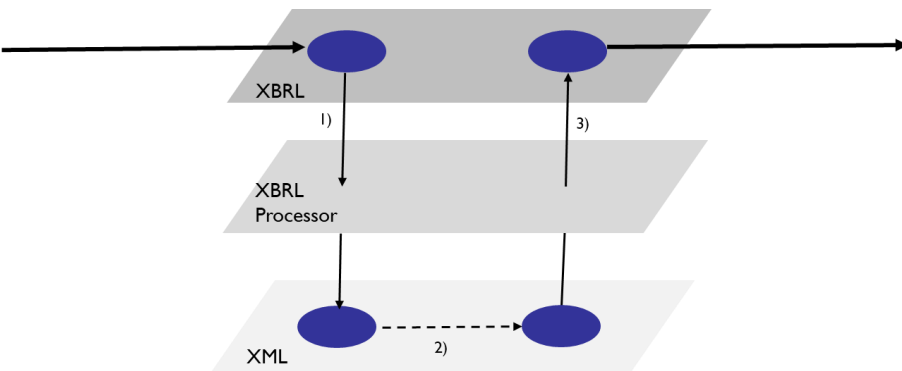
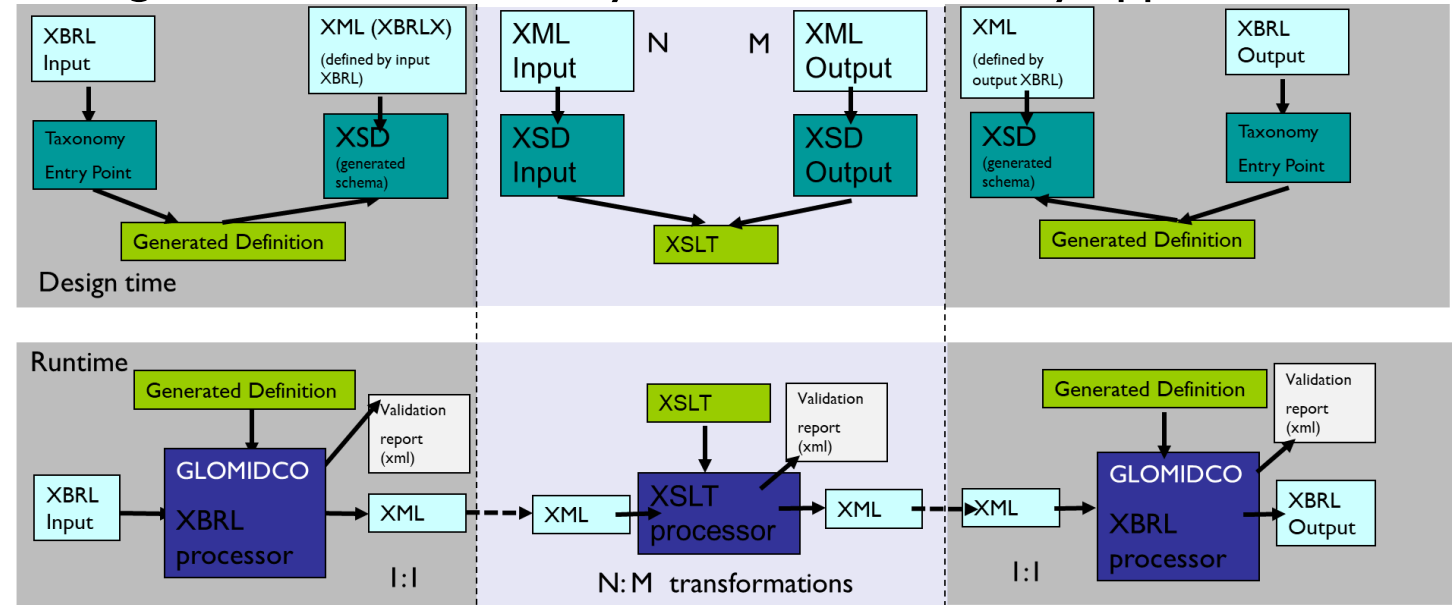
Example NBA Assurance (NL)



XBRL & Integration – FULL functional

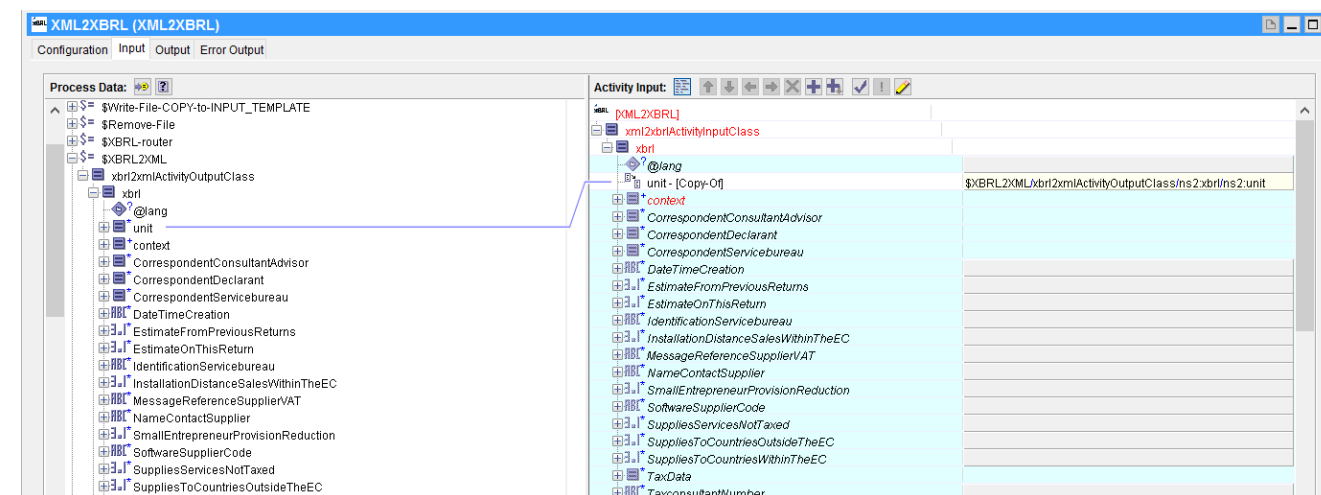
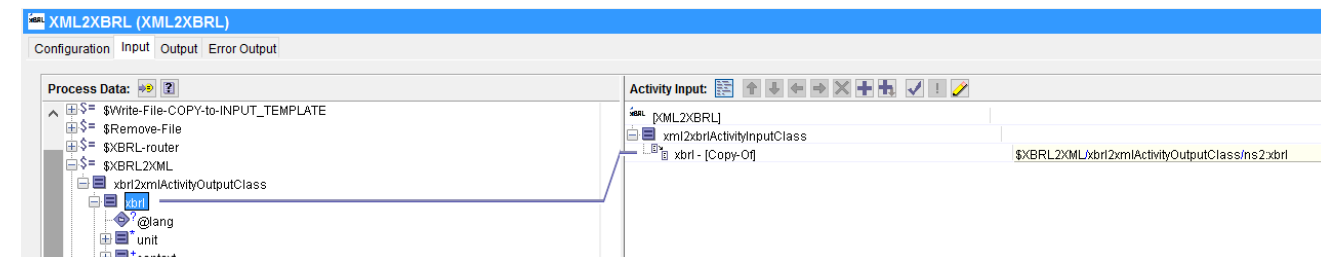
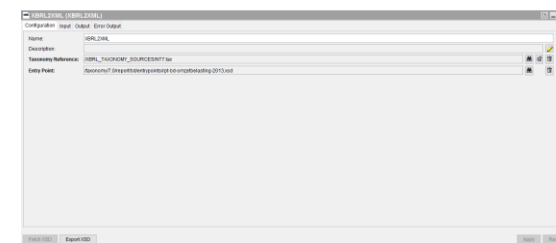
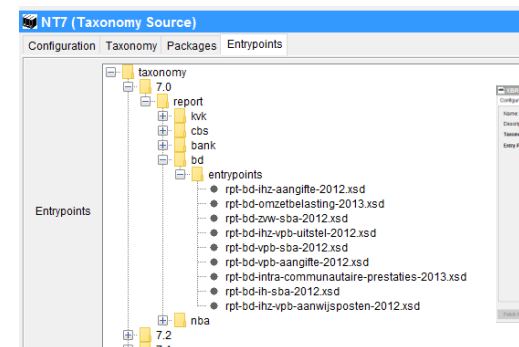
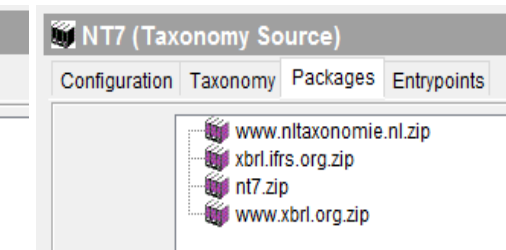
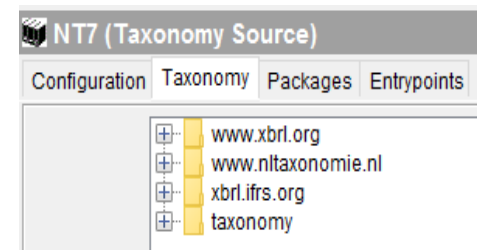
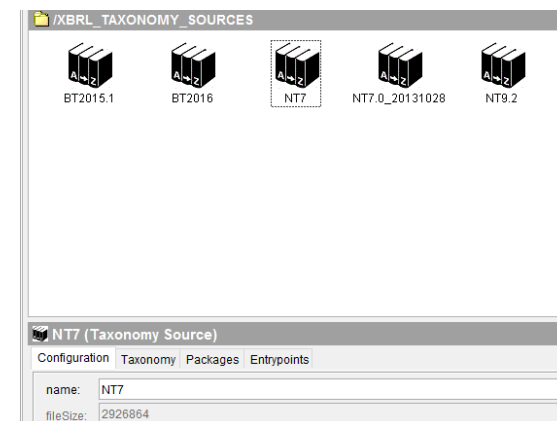
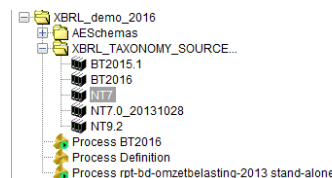
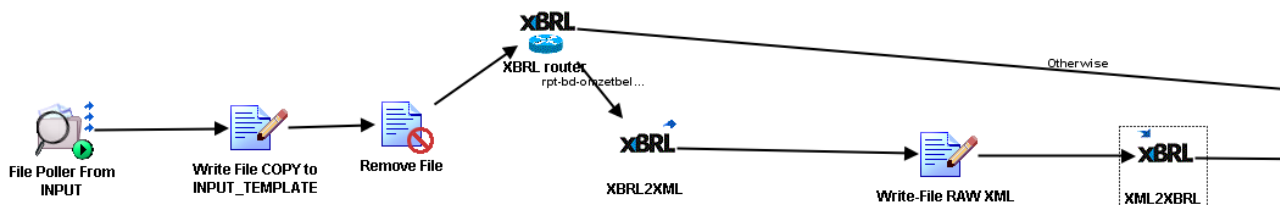


Middleware integrates OOTB with any ERP like SAP or any application





Tibco BusinessWorks



MuleSoft

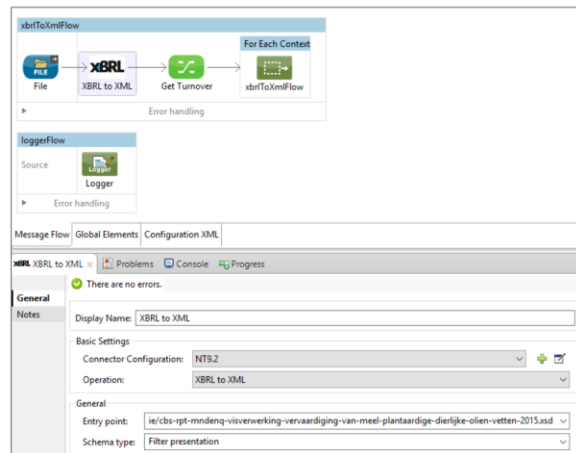


XBRL to XML

Created by Christian Vermeulen, last modified by Bas Philippus on Oct 02, 2015

The XBRL to XML component return an XML file, representing the processed XBRL instance, as a String. Entry points found i schema type and filter. Through Mule DataSense, the entry point can be mapped in Anypoint Studio.

Example XBRL to XML configuration:

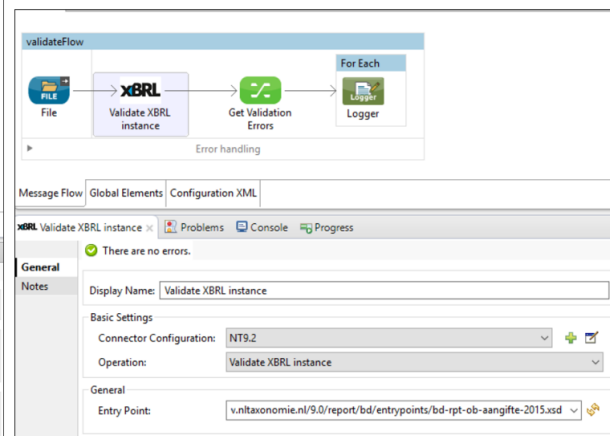


Validate XBRL instance

Created by Christian Vermeulen, last modified on Sep 28, 2015

Validate XBRL instance is used to validate XBRL instances and an XML validation report is generated based on the selected entry point in a taxonomy. Schema type and filter are not applicable here. Through Mule DataSense, the X

Example validate XBRL instance configuration:



Using DataWeave to map to XML

Created by Maarten van Berthien, last modified on Oct 19, 2015

Example overview

This section contains an example how you can use the Mule Dataweave component to map several input types to xml, using a taxonomy XSD schema. When the input is mapped to a valid XML message, the XBRL component can be used to transform the message into a XBRL message. In our example we use the following entripoint: www.nltaxonomie.nl/9.0/report/bd/entripoints/bd-rpt-ob-aangifte-2015.xsd. This example contains a step-by-step guide on howto successfully create a XBRL message using multiple sources as input. Figure 1 contains the complete example flow.

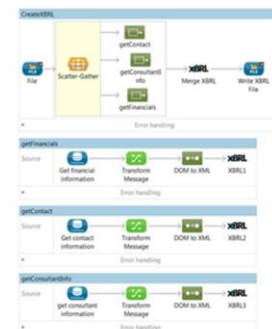


Figure 1: Complete example of XBRL flows

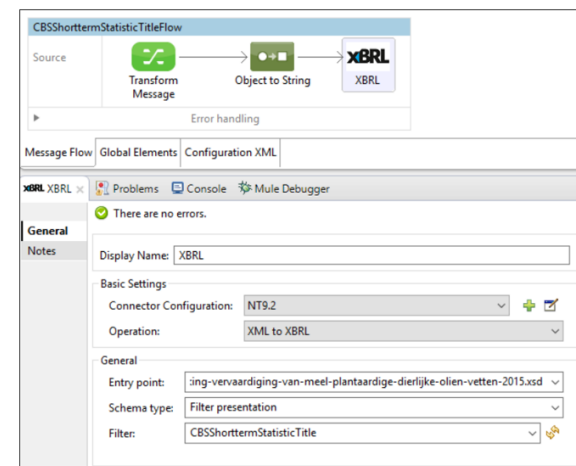
XML to XBRL

Created by Christian Vermeulen, last modified by Bas Philippus on Oct 02, 2015

The XML to XBRL component return an XBRL file, representing the processed XML file, as a String. E schema type and filter. Through Mule DataSense, the entry point can be mapped in Anypoint Studio.

Please Note that an Object to String transformer must be placed before the XBRL component.

Example XML to XBRL configuration:

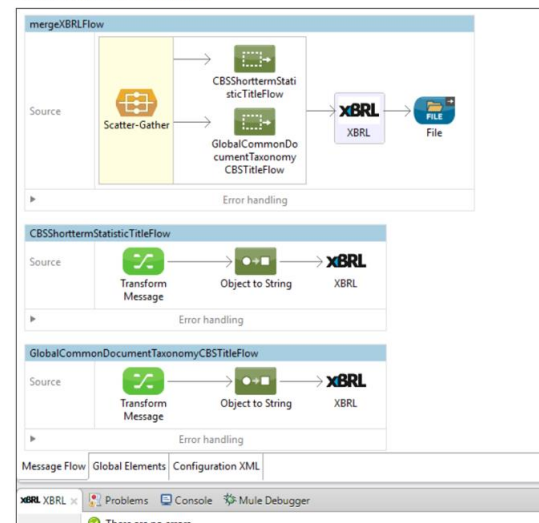


Merge XBRL

Created by Bas Philippus, last modified on Oct 02, 2015

The merge XBRL operation is used to create a single XBRL instance from multiple XBRL files.

Example merge XBRL configuration:

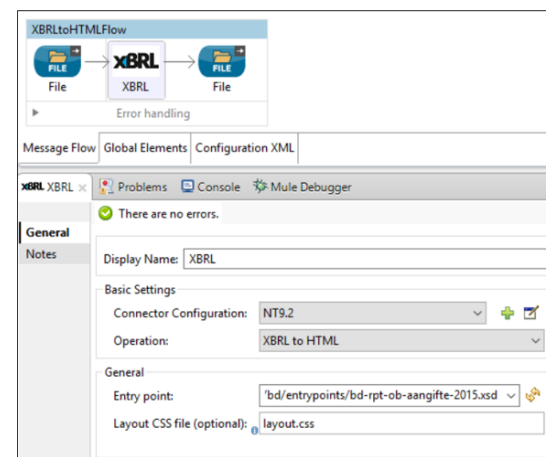


XBRL to HTML

Created by Christian Vermeulen, last modified by Bas Philippus on Oct 02, 2015

XBRL to HTML generates a HTML report based on the selected entry point and processed X custom layout to the generated report. Schema type and filter are not applicable here.

Example XBRL to HTML configuration:



The image is a collage of screenshots from the GLOMIDCO web application, illustrating the configuration of an XBRL Adapter. The screenshots are arranged in a grid-like fashion, with some overlapping. The top row shows the main navigation menu on the left and the 'Adapters > XBRL Adapter > Connections' page on the right. The middle row shows the 'Adapters > XBRL Adapter > Connection Types' page. The bottom row shows the 'New Adapter Service' wizard, specifically the 'TaxPackage Selection' and 'EntryPoint Selection' steps. Red boxes highlight the 'XBRL Adapter' menu item and the 'Adapter Service' option in the wizard. Text overlays provide instructions: 'Select Taxonomy package (depends on .tax files found in Package selected in Connection)' and 'Select Entry Point from dropdown list'. The bottom of the image features the GLOMIDCO logo and the tagline 'The Integration Experts'.

Navigation Menu:

- Server
 - Scheduler
 - Service Usage
 - Statistics
- Logs
 - Error
 - Guaranteed Delivery
 - Security
 - Server
 - Service
 - Session
- Packages
 - Management
 - Publishing
 - Subscribing
- Solutions
 - VCS...
 - Deployer...
 - EDI...
 - EDIINT...
 - HL7 Module...
- Adapters
 - PKI...
 - Salesforce.com Adapter...
 - JBIC Adapter...
 - RosettaNet...
 - Chem...
 - SWIFT...
 - ACH...
 - Sample Adapter...
 - XBRL Adapter...**
- Security
 - ACLs
 - Certificates
 - CSR Guard
 - Enterprise Gateway Rules
 - Keystore
 - OAuth
 - Outbound Passwords
 - Ports
 - SAML

Adapters > XBRL Adapter > Connections

- [Configure New Connection](#)
- [Filter Connections](#)

Connection Name	Package Name	Connection Type	Enabled
configtest1	Test	TAX Connection	Yes

Adapters > XBRL Adapter > Connection Types

- [Return to XBRL Adapter Connections](#)

Connection Type	Description
XBRL GL Connection	connection linking XBRL GL Taxonomies
XBRL FR Connection	connection linking XBRL FR Taxonomies Location

New Adapter Service

Select Adapter Type

Adapter Type

- JBIC Adapter
- MLLP Adapter
- Salesforce.com Adapter
- Sample Adapter
- XBRL Adapter**

TaxPackage Selection

taxonomy/1.0/report/bd/entrypoints/rpt-bd-amzbelasting-2013.xsd

EntryPoint Selection

taxonomy/1.0/report/bd/entrypoints/rpt-bd-amzbelasting-2013.xsd

taxonomy/7.0/report/bank/entrypoints/rpt-bank-ihz-aangifte-2012.xsd

taxonomy/7.0/report/bank/entrypoints/rpt-bank-ihz-aangifte-met-winstbijlage-2012.xsd

taxonomy/7.0/report/bank/entrypoints/rpt-bank-ihz-aangifte-met-winstbijlage-tussentijds-2012.xsd

taxonomy/7.0/report/bank/entrypoints/rpt-bank-krediet-kl-comm-2012.xsd

taxonomy/7.0/report/bank/entrypoints/rpt-bank-krediet-kl-fisc-2012.xsd

taxonomy/7.0/report/bank/entrypoints/rpt-bank-krediet-kl-fisc-cns-2012.xsd

taxonomy/7.0/report/bank/entrypoints/rpt-bank-krediet-kl-fisc-np-2012.xsd

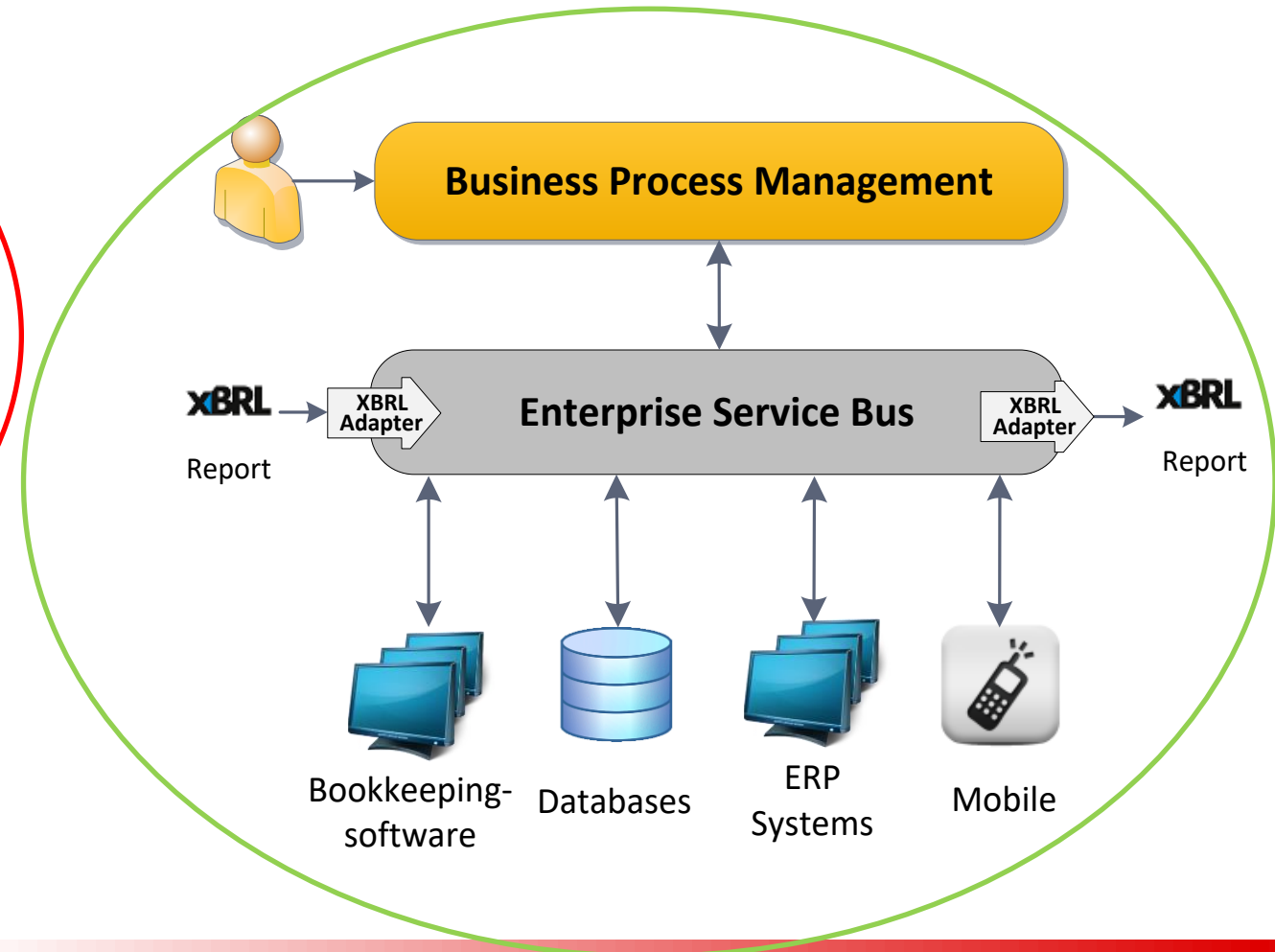
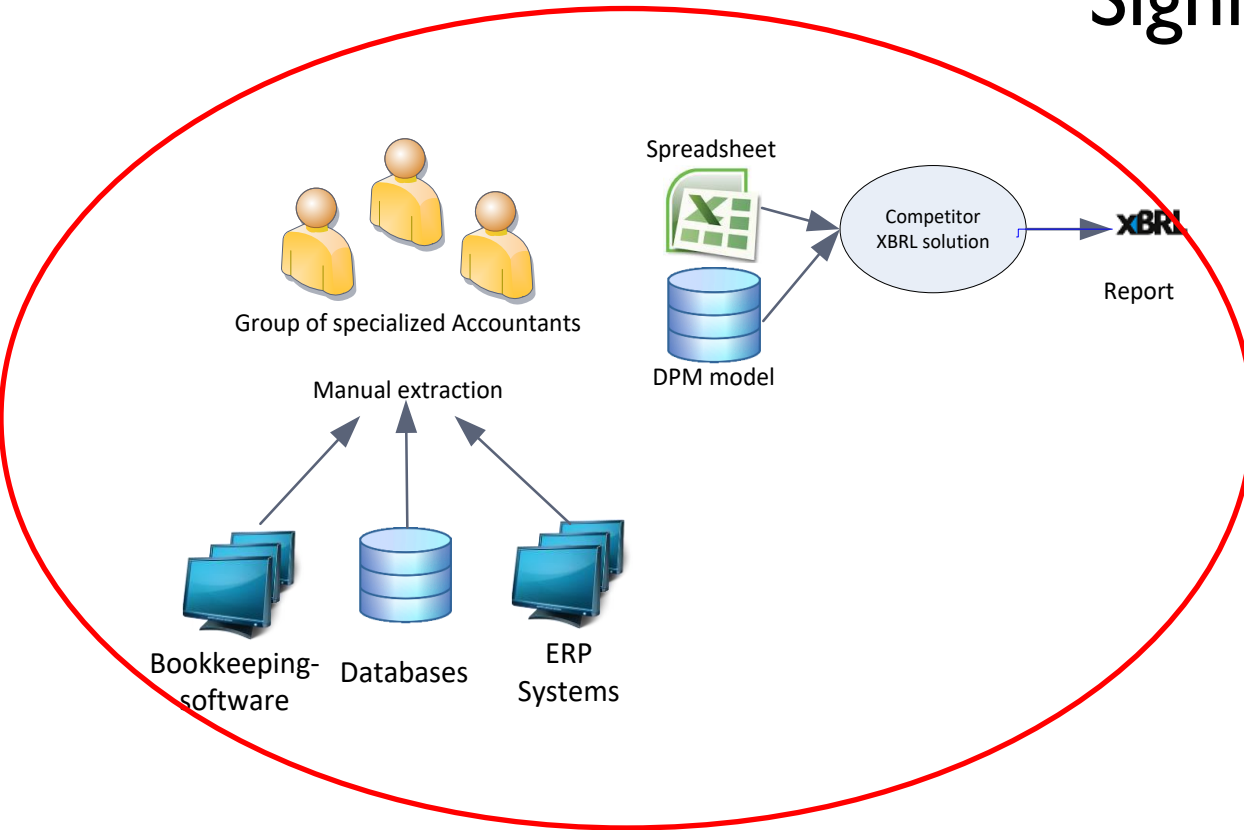
GLOMIDCO The Integration Experts

GLOMIDCO XBRL Design principles

- Event driven / message driven
- Real-time / transactional
- Data in-flight, no databases
- STP (Straight Through Processing)
- ESB (Enterprise Service Bus)
- SOA/BPM based principles
- Full API Led architecture support
- Enables Data Lake House
- Supported by GEN-AI

What differentiates our XBRL solution?

Significant costs and quality improvements



Present - 2025

- In 2023 Gen-AI (chat-GPT) made entrance
- XBRL standards and sub-standards moved on
- Java XBRL processor needs to be updated
- XBRL too complex for AI to handle without XBRL processor (for example to validate)
- Base design of existing JAVA XBRL processor is good (XBRL, XML, JSON, inline XBRL ready)
- New demand for XBRL for example sustainability standards like ESG

The main question of today:

- Is there in 2025 a market **demand** for XBRL components in middleware? (IBM, Tibco, SF, expanding to Java based integrations for example SAP CPI?)

If the answer is yes

- Updating all middleware connectors, adapters and plugins to latest versions of middleware is required
- An updated version of the Java XBRL processor needs to be build! (accelerate build using AI?)
- Is there **funding** for a such?

GLOMIDCO Facts

- Founded in 2000
- Focus on Integration with first class vendors (Tibco, SoftwareAG, MuleSoft and many more leaders in integration)
- 2014 Rebranded to GLO-Integration (termination of XBRL effort)
- 2022 GLO-Integration (55 staff) sold to Deloitte (XBRL and GLOMIDCO as brand excluded from sale)
- April 2024 GLOMIDCO operational again
- Research driven and focus on education
- April 2024 also partnership in Digtect (focused on Meta Data), see my Meta Data presentation using EC-API-Design

Questions

Please note: The speaker has **severe hearing problems!**

